

ADVENT



GB

U-STORAGE USER MANUAL

ADVUF7010A128

ADVUF7010A256

ADVUF7010A512

Introduction

Thank you for purchasing the U-Storage device. This manual explains how to use the application software of the device.

Safety Precautions

Please follow the safety precautions carefully before you use the U-Storage device. Make sure that you use the device correctly according to the procedures described in this manual.



Warning

This mark indicates topics that could lead to serious injury to your body or damage to the device if ignored or handled incorrectly.

Warnings

- Do not attempt to disassemble or alter any part of the device that is not described in this guide.
- Do not allow the device to come into contact with water or other liquids. In the event that water or other liquids enter the interior, immediately unplug the device from the computer. Continued use of the device may result in fire or electrical shock. Please consult your product distributor or the closest support center.
- To avoid risk of electrical shock, do not perform the plug and unplug operations with wet hands.
- Do not place the device near a heat source or expose it to direct flame or heat.
- Never place the device close to equipment generating strong electromagnetic fields. Exposure to strong magnetic fields may cause malfunctions or data corruption.

System Requirements

There are minimum hardware and software requirements that must be satisfied to ensure the device to function properly.

- Computer Model IBM PC/AT Compatible, Power Macintosh, PowerBook, iMAC or iBook
- Operating System Windows 98 Second Edition, Windows Millennium Edition (Windows ME), Windows 2000, Windows XP, Windows 2003 Server, Linux 2.4 or higher, Mac OS 9.0 or higher
- Interface USB
- Free Hard Disk Space No less than 3 MB
 - Windows 98 SE does not support default Mass Storage Driver. You have to install the driver bundled with the device.
 - The U-Storage application software can only run on Microsoft Windows 2000/XP.
 - However, the U-Storage basic functions can be supported with all the operating systems listed above.

Basic Functions

1. Plug and Play



When you plug the device into the USB port of your computer, you will see a “Removable Disk” icon in the file manager window. In **Macintosh**, once you plug the U-Storage into the USB port. You can see the disk icon in the “Desktop”.

In **Linux** OS, you can mount the device by following the instructions below:

- Execute `cd/etc/sysconfig/ (cat/etc/sysconfig/hwconf | more)`
- Check the device information in `hwconf`, write down the mount point.
- Make a directory in `/mnt` (ex: `mkdir /mnt/usbHD`)
- Then, execute `mount /dev/sda1/mnt/usbHD` (if mount point was `.dev/sda`)

2. Read and Write

You can retrieve or store files in the device as a hard disk. The read/write operation of the device is the same as that of a hard disk.

3. Unplug

To minimize risk of data loss on Windows ME and 2000, please follow the safe removal procedure . You can find the safe removal icon in your computer's notification area.

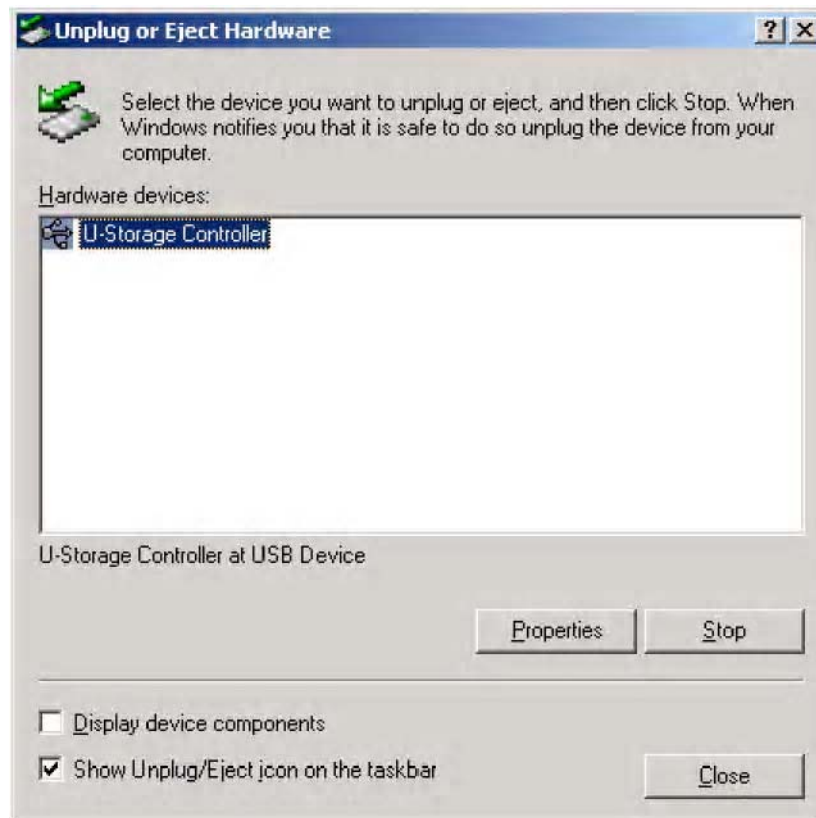


Double click the “safe removal” icon; the “Unplug or Eject Hardware” window will pop up. You can select the device you want to remove. Then, click the [Stop] button. After that you can unplug the device from the USB port of your computer.



Warning

Before removing the U-Storage device, make sure the LED is not flashing. When the LED flashes quickly, there is some traffic going on between the host computer and the U-Storage device. Don't remove the U-Storage at this moment. Otherwise, it may cause some damages to the data or even the U-Storage device itself.



Warning

If you do not follow the safe removal procedure on Windows ME and Windows 2000 operating systems, data loss caused by the “write cache” issue may happen.

On Macintosh operating systems, you can drag the removable disk icon into the trash. This action will perform the “Eject” function.

On Linux operating system, please follow the “umount” procedure to un-mount the device.

Partition Type

With U-Storage application software, you can protect your device with password log-in and partition your device into “Public” and “Security Areas

1. **Public Area** There is no password protection to this area. You can do any basic functions described in the “Basic Functions” section in this area.
2. **Security Area** This area cannot be accessed without security log-in. Once you log in, the device will be switched from “Public Area” to “Security Area”. After successful switching, you can do any basic functions described in the “Basic Functions” section in this area.

☞ You can only view either “Public Area” or “Security Area” at the same time in the same disk logic unit number (Drive).

In U-Storage, you can partition the storage area of your device into any one of the following:

1. Public Area Only (Single Partition)

Make the entire device accessible to everyone.

2. One Public and Security Area (Single Partition)

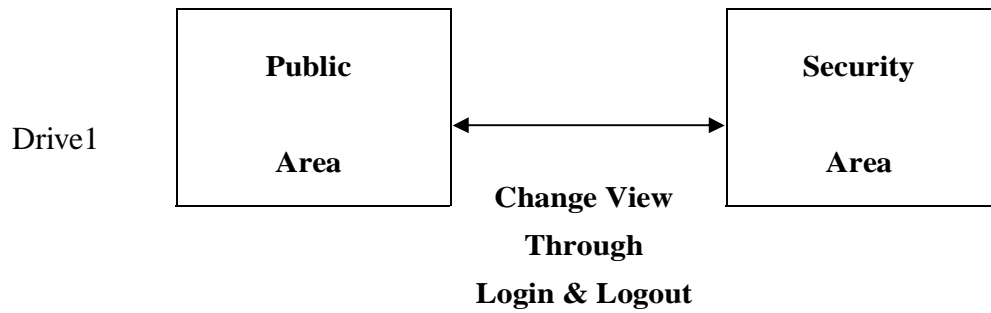
Partition the device into two areas in one Drive: Public Area and Security Area.

The Security Area can be accessed only with a correct password.

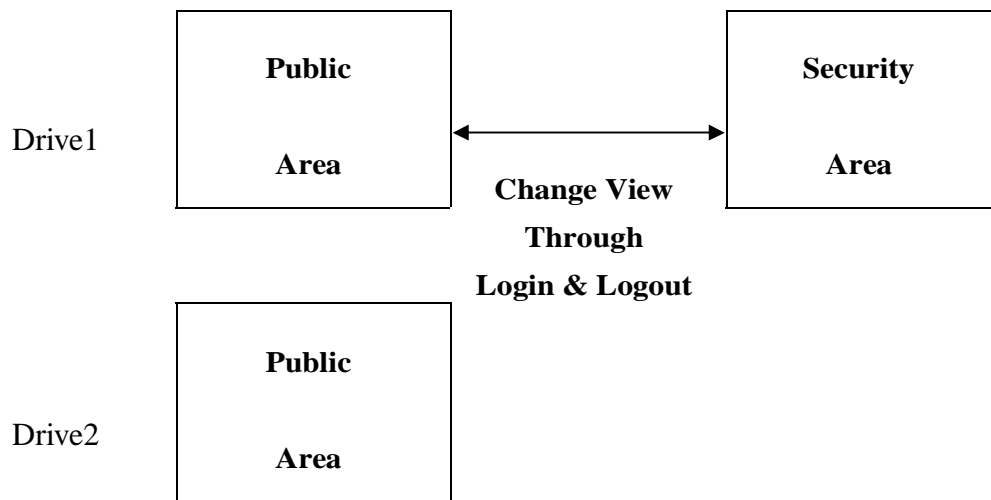
3. Two Public and one Security Area (Dual Partition)

Partition the device into three areas in two Drives: Public Area and Security Area in Drive1, and Public Area in Drive2.

Please refer to the figure below.



This figure shows detailed operations of single Drive.



This figure shows detailed operations of multiple Drives.

Type	Function	Security	Public area read only	Password	Disk Logical Unit Number	Disk Letters in OS
Public Area Only		No	No	No	1 (Drive1)	1
One Public and Security Area (Single Partition)		Yes	No	Yes	1 (Drive1)	1
Two Public and One Security Area (Dual Partition)		Yes	No	Yes	2 (Drive1&2)	2

This table describes the functions of the three partition types.

Use the U-Storage Software

On the Windows Platform

Install the USB Driver:

- On Windows 98 SE, you need to unplug and re-plug the U-Storage device after installing the driver.

For Windows NT systems, users should log on as the Administrator to use this program.

Use U-Storage the First Time:

U-Storage.exe can be found in the U-Storage device and the “software” folder of the driver CD.



Warning

U-Storage.exe can only handle one device at the same time. If otherwise, the U-Storage.exe may not perform properly or even cause data loss.



By default, the device is non-security. So, the “Create Partition” function will be active when you run this software the first time.

U-Storage - Create Partition:

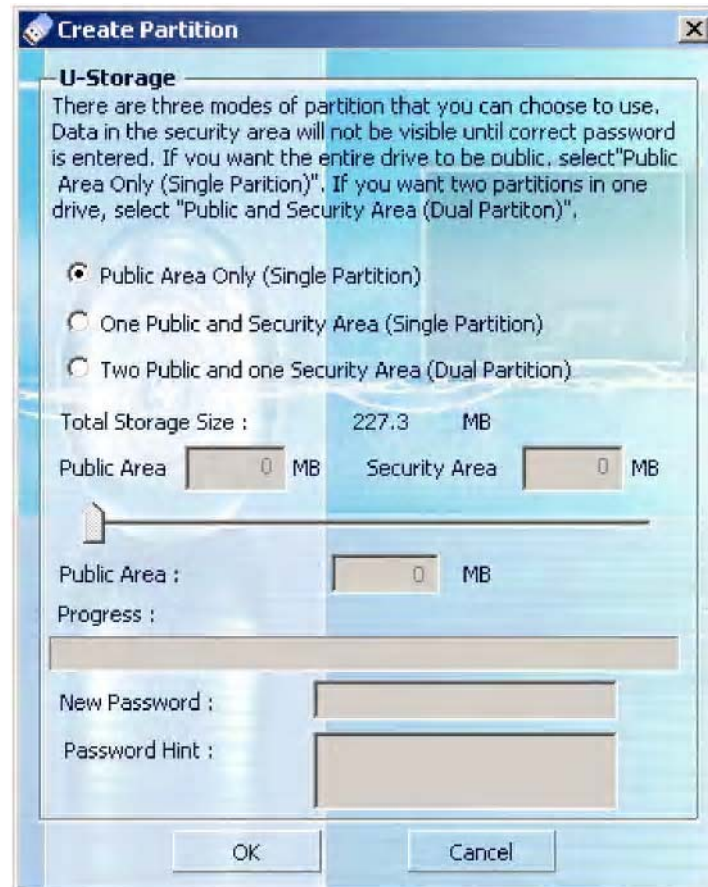
You can do the [Create Partition] action to your U-Storage.



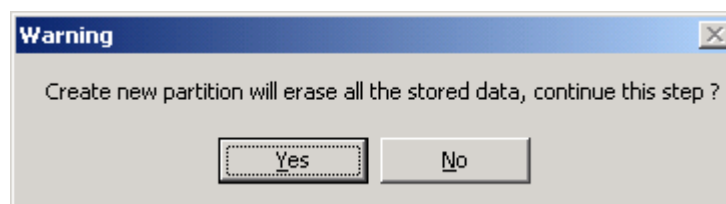
Warning

The [Create Partition] action will erase all the data in the device. The action is not reversible. If necessary, back up your data before taking this action. Also, please close all the active programs and windows on the screen of your computer.

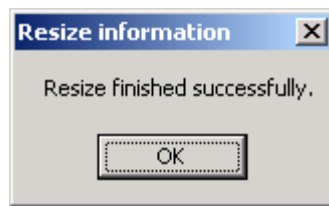
1. Click the [Create Partition] button in the U-Storage manager window. The following “Create Partition” window will pop up.



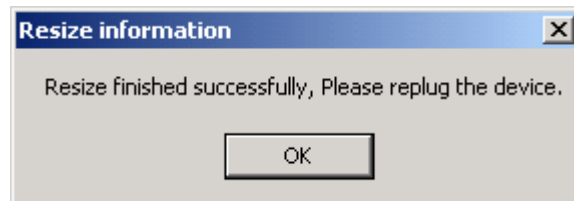
2. Select the partition type you want.
3. If you select the “One Public and Security Area (Single Partition)” or “Two Public and One Security Area (Dual Partition)”, you can set the password for accessing the security area in the “New Password” window. The maximum length of the password is 8 characters. You can key in a hint for your new password in the “Password Hint” window. This hint will be displayed when you click the “Hint” button in the “Login” window. The maximum lenght of the Hint is 32 characters. After you finished the setting, click the [OK] button. The “Confirmation” window will pop up.



4. Once the resizing is finished, the following message will pop up.



When the following message pops up, please replug the device.



5. After you finish the "Create Partition", the "U-Storage.exe" program will be copied into the "Public Area (Drive1)" automatically.

Login the Security Area:

If you partition the device with security, you can execute the following “Login” function to access the Security Area.



Warning

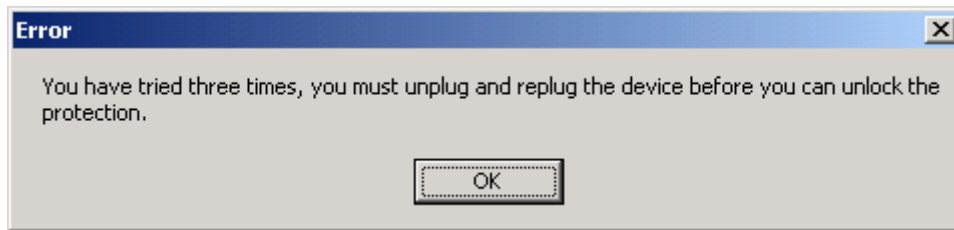
When you do the login and logout actions with the device, please make sure there is no application or program running or document unclosed on the device. Otherwise, it may cause data loss or damage.

1. Key in the password in the “Password” area.

- You can create the password hint in the [Create Partition] or [Manage Password] functions. Once you create the password hint, you can click on the “Hint” button in the “Login” window to help you recall the correct password. The hint will be shown for three seconds.



- You have three tries to input the password. After three tries, the following message will pop up. And you have to unplug and plug the device in order to do other actions.



2. Click on the [OK] button.

Logout the Security Data Zone:

There are three methods to logout security area:

1. Click the right mouse button and select U-Storage in the notification window, and select [logout] to exit the security area after the following window pops up



Warning

When you do the login and logout actions with the device, please make sure there is no applications running or documents unclosed on the device. Otherwise, it may cause data loss or damage.



2. Click the right mouse button and select [Logout] or [Exit].



3. Double click the U-Storage icon in the notification window.



Manage Password:

User can change password and key in the password hint by selecting the “Manage Password” function in the U-Storage main window. You can only select this item when the security area is activated.

A dialog box titled 'Manage Password' with a close button (X) in the top right corner. The dialog has a light blue background. Inside, there is a section titled 'U-Storage' with a sub-header. Below the sub-header, there is a text box containing instructions: 'This will be your administrative password. To change the password enter the old password and enter a new password and then confirm.' Below this text, there are four input fields: 'Old Password :', 'New Password :', 'Confirm New Password :', and 'Password Hint :'. At the bottom of the dialog, there are two buttons: 'OK' and 'Cancel'.

1. Key in your current password in the “Old Password” area.
2. Then, key in your new password and confirm in the “New Password” and “Confirm New Password” areas. The maximum length of the password is 8 characters.
3. You can key in the hint of your new password in the “Password Hint” window. This hint will be displayed when you click the “Hint” button in the “Login” window.

FAQ

Do I need to format the drive before using it the first time?

No, the device has been pre-formatted.

Why can't I write data into the public area when the security area is activated?

The public area will be set to read-only mode when the security area is activated. The purpose is to prevent the security utility from being deleted accidentally.

Why is my second partition not shown in Windows 2000?

Because original Windows 2000 doesn't support multiple partitions, you must upgrade your OS to service pack 3 or above.

Trademark Acknowledgments

- IBM is a registered trademark of International Business Machines Corporation.
- iBook and iMac are trademarks of Apple Computer, Inc.
- Macintosh, PowerBook, Power Macintosh are trademarks of Apple Computer, Inc.
- Microsoft, Windows, Windows 98, Windows ME, Windows 2000, Windows XP, and Windows 2003 Server are either registered trademarks of Microsoft Corporation in the United States and/or other countries.
- Other names and products not mentioned above may be registered trademarks of their respective companies.



■ This symbol on the product or in the instructions means that your electrical and electronic equipment should be disposed at the end of life separately from your household waste. There are separate collection systems for recycling in the EU. For more information, please contact the local authority or your retailer where you purchased the product.